



SPECIFICATIONS:

B-Scan

- Ultrasound Probes 10MHz B-Scan Probe
- Axial Resolution 10MHz B-Scan: $\leq 0.1\text{mm}$
- Lateral Resolution 10MHz C-Scan: $\leq 0.2\text{mm}$
- Scan Depth 10MHz: 28mm — 60mm
- Scan Angle 6-Step Selectable
- Cineloop 53°
- Image Acquisition 10s/100 frames with dynamic replay
- Gray Scale B-Scan images Snapped & Saved in real-time without any limitation
- Gain 256 Levels
- TGC 1-105dB adjustable
- B+A Mode Default
- Color Codes Vitreous-Enhanced Mode Customized
- Measurements AL Measurement
- Annotation 8
- Magnification Distance, Area & Angle

Biometric A-Scan

- Probe 10MHz with Fixation Red Light
- Gain 1-60dB
- Measuring Method Contact or Immersion
- Measuring Range AL Range: 15mm-40mm
- Measuring Accuracy $\pm 0.05\text{mm}$
- Measuring Mode Automatic (Normal, Aphakic, Special and Cataract) or Manual
- Measurements Average and Standard Deviation for up to 10 scans per exam
- Configurable Tissue Velocities under Special or Manual mode

General

- User Interface : Monitor, keyboard, mouse, touch screen and footswitch;
- Monitor : Resolution: 1024x768, gray scale ≥ 256 ;
- Keyboard & Mouse : USB interface, wireless keyboard and mouse;
- Output Interface : 4xUSB2.0 and HDMI interface;
- Net Weight : 5.5kg;
- Size : 34cm x 31cm x 8cm.

IOL Calculation

- General SRK-II SRK-T
BINK-II HOLLADAY
HOFFER-Q HAIGIS
- Post-Refractive History-derived Double K/SRK-T
Refraction-derived ROSA
SHAMMAS

SMS[®]

Safe Medical Supply Nepal Pvt. Ltd.
Balaju Industrial District,
Ward No.16, Kathmandu, Nepal

Tel: +977-1-4970304
Mob/Whatsapp: +977-9704569805
E-mail: smsnepalpl@gmail.com



SMS[®]

SMS®

US-1000

सेफ मेडिकल सप्लाय नेपाल प्रा.लि.
SAFE MEDICAL SUPPLY NEPAL Pvt. Ltd.



Ophthalmic Products & Disposables "नेपालमै बनेको"

Professional Ultrasound

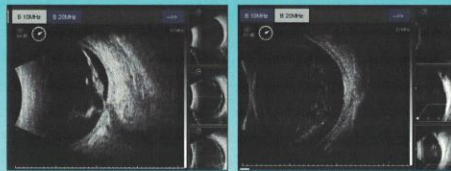
B-Scan Enhanced Visibility and User-friendliness

Image/video buffer slots for immediate click-and-check, review and comparison

Images/videos captured in real time and saved in lossless format (.bmp & .avi)

Zooming and scan depth adjustment for better ocular disease observation

Vitreous-Enhanced Mode improves visibility at vitreous body



A-Scan & IOL Calculation Enhancements and Tight Integration

Biometry buffer slots for immediate click-and-check, review and comparison

Improved accuracy and reliability with Average and Standard Deviation for up to 10 scans per exam

6 popular IOL formulae and 5 Post-refractive IOL formulae available



Full Reporting Capabilities

Full report integrating A-scan/IOL results, B-scan images and doctor's comments with customized dictionary of symptom entries

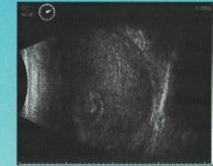
Comprehensive Data Archiving and Management

Simple UI allows users to load, search, print, etc. Unlimited storage capacity for over 20,000 exams (8 lossless images per exam)



Features

- High Definition 10MHz B-scan Image
- High Resolution LCD touch screen
- Image/video snapped and stored in real time in multiple buffer slots for immediate comparison and review
- Multiple TGC options for operator's preference including vitreous-enhanced mode
- Editable clinical report with A-scan/IOL results, B-scan images, and textual comments with configurable entries
- Reports in .PDF format for sharing and print-out
- Compatibility with graph/text printer
- Diverse connections via HDMI and USB 2.0 ports
- HDMI interface for double-screen showcase
- DICOM 3.0 protocol available via USB 2.0 port
- Massive storage capacity for over 20,000 exams



B-Scan Images

